





Blackbutt
Quarter Cut

Contents

Understanding CPV's Natural Timber Veneers	1
Selecting a Panel Grade / Specification	4
10 Steps when Specifying Timber Veneer	4
Stocked Veneered Board	6
Stocked Panel Products	20
DECOEDGE - Thin Veneer Edging	39
DECOEDGE – 2mm Multi Veneer Edging	40
Raw Veneer Leaf Product Range	40
Veneer Skin Pack Product Range (SPK)	41
Melamine Skin Pack Product Range (SPK)	41
Melamine Product Range	41
The Essentials Collection - Edging	42
EDGEBOND / EDGEBOND+	43

Understanding CPV's Natural Timber Veneers

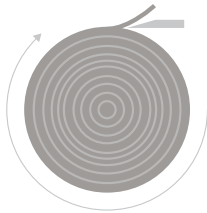
As one of Australia's largest and bespoke veneer suppliers, we bring unrivalled service and technical expertise to the process of manufacturing in this sector. Understanding how a veneer is created will help you select the right veneer for your next project.

Veneer Slicing Methods

The method by which veneers are sliced from the log defines their general appearance or structure.

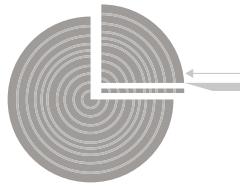
Rotary Peeled

The log is centrally fixed to a lathe, and a sharp blade peels a continuous slice of veneer along the entire length, giving a bold, widely varying pattern.



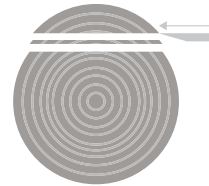
Quarter Cut

Veneers cut from the quarter cut segment of the log produce a fairly straight (parallel) grain structure.



Crown Cut

Veneers cut from this section of a log are known as 'crowns' or 'flowers' and have some straight grain sections on either side. As the cut moves towards the centre of the log, the crown becomes narrower and finer, and the straight grain section wider apart.



Veneer Joining / Matching Techniques

A variety of visual effects for your project can be achieved by the way we join the veneer leaves and therefore the way the veneer sheets / layons are pressed onto your selected substrate.

Book Matched

Adjacent leaves are opened like a book so that each leaf is a mirror image of the one next to it.



Slip Matched

The veneers are laid side by side facing the same way. The result is the same grain pattern being repeated across the width of the panel.



Random Matched

Leaves are laid in a random fashion to disperse grain characteristics across and along the sheet.



Reverse Slip Matched

Alternate leaves are turned end to end, resulting in crowns being balanced at each end of the panel.



Selecting a Panel Grade / Specification

Depending on the application, you may be able to vary the quality of the veneer or other backing on the panel. Common panel grades include:

G2S: (Good two sides)

The same first grade veneer on both sides of the panel. Example: Doors, open shelving where a first-grade appearance is required on both faces.

DGB: (Downgraded back)

The same species on both sides but downgraded quality on the back veneer.

Example: Doors, end panels, drawer fronts, internal cabinetry where the internal appearance is of lesser importance.

BAMO

(Back at manufacturer's option.)

First grade specified veneer used on face, any other veneer on the back.

Example: Wall panels, ceiling panels or panels where generally only the face is shown, and a lesser quality veneer is used to balance the back.

WIS: (White one side)

First grade specified veneer used on face, pre-camber MRMDF Melamine 1-Side on the back.

Example: Doors, end panels, drawer fronts, internal cabinetry or applications where the internal appearance is of lesser importance.

NB (No Back):

Specified veneer used on face but with no backing veneer or laminate. Example: Primarily used for door skins where the back is being bonded to substrates. Other uses are for bending plywood where only the face veneer is used. Note, these are unbalanced which may cup and/or bow after manufacture.

Mounting on Substrates

Once they have been sliced and dried, a number of veneer leaves are then joined into a single sheet size before being bonded in a hot press to a suitable substrate.

Commonly Used Substrates:

- Standard Particleboard
- HMR Particleboard
- Standard MDF E0
- MR MDF E0
- Fire-Rated MDF / MR MDF
- Plywood
- Bending Plywood

10 Steps when Specifying Timber Veneer

- 1 Choose a Veneer:**
Make an initial selection from Natural, or Reconstituted veneer samples.
- 2 Speak to your Account Manager:**
Contact your Account Manager to get a control sample with a specified batch number to ensure we have the quality and quantity your project requires.
- 3 Choose a Cut:**
Rotary, quarter or crown?
- 4 How will it be matched?**
Book, slip, random or reverse slip matched?
- 5 What is the grain direction?**
Will the grain of the veneer run vertically or horizontally?
- 6 What grade of panel is required?**
G2S, DGB, BAMO, WIS or NB?
- 7 What substrate?**
STD Particleboard, HMR Particleboard, STD MDF E0, MR-MDF E0, Fire-Rated MDF, Plywood and Bending Ply.
- 8 Dimensions of Panel?**
Length, width and thickness?
- 9 Quantity and Timing?**
How many panels and when do you require the material?
- 10 Delivery Details?**
Where do you want the panels delivered and to whom?

Natural Variations

Part of their charm as a natural product is that veneers from the same timber species can vary greatly in colour and pattern.

As a consequence, any samples supplied are an indication only of the general character of the chosen species and you should ask your Account Manager for a batch control sample.

Also, a variety of visual effects can be achieved by varying the way that the veneers are laid on the substrate.

If broad colour and grain pattern is important for the design integrity of your project, you should talk with your Account Manager before the project starts.



Blackbutt
Quarter Cut

Stocked Veneered Board



American Oak Crown Cut

Species: Quercus Alba | Density: 755kg/m3

American White Oak is a sturdy, gorgeous, and versatile wood that's easy to work with, harvested from responsibly managed forests. It's a favourite in cabinetry and furniture making, thanks to its heartwood, which ranges from a soft to deep brown with a hint of olive, while the sapwood shines in paler, lighter tones, sometimes blending smoothly into the heartwood.

In Stock Availability:

Product Description	Dimension	10mm	17mm	19mm
American Oak Crown DGB MDF MR E0	2400 x 1200		●	●
American Oak Crown DGB MDF MR E0	2700 x 1200			●
American Oak Crown G2S MDF MR E0	2700 x 1200			●



Stocked Veneer Edging – Refer Page: 40 – 41

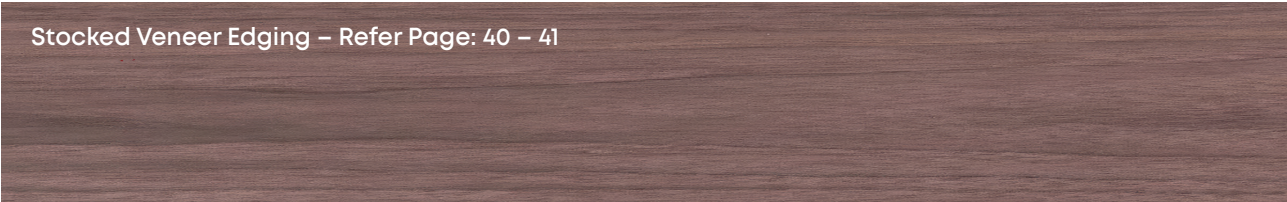
American Oak Quarter / Rift Cut

Species: Quercus Robur & Petraea & Alba | Density: 755kg/m³

American White Oak Rift Cut is a strong, striking, and adaptable timber that's a pleasure to craft with, sourced from sustainably managed forests. It's prized in cabinetry and furniture design for its heartwood, which spans from a subtle to rich brown with a touch of olive, complemented by sapwood in softer, lighter hues. The rift cut's tight medullary banding and fine grain lines create a captivating look without an overpowering grain presence.

In Stock Availability:

Product Description	Dimension	10mm	17mm	19mm
American Oak Rift Quarter DGB MDF MR E0	2400 x 1200			●
American Oak Rift Quarter G2S MDF MR E0	2400 x 1200			●



American Walnut Crown Cut

Species: Juglans Nigra | Density: 610kg/m3

American Walnut is highly prized by woodworkers for its excellent workability and deep, rich brown hue. This timber stands out for its dimensional stability, resilience to shock, and impressive strength. Its heartwood ranges from a light brown to a dark chocolate shade, often accented with darker brown streaks, and occasionally displays subtle hints of grey.

In Stock Availability:

Product Description	Dimension	10mm	17mm	19mm
American Walnut Crown DGB MDF MR E0	2400 x 1200			●



Stocked Veneer Edging – Refer Page: 40 – 41



Blackbutt Natural Feature Grade

Species: Eucalyptus Pilularis | Density: 900kg/m³

Feature-grade Blackbutt is a popular choice for furniture making and rustic styles, thanks to its unique, natural, and visually appealing look. It often showcases characteristics like gum veins, small borer holes, and natural stains. Because of these traits, it's typically crafted in a Random Match pattern and closely resembles Blackbutt Flooring in its overall aesthetic.

In Stock Availability:

Product Description	Dimension	10mm	17mm	19mm
Blackbutt Natural Feature DGB MDF MR E0	2400 x 1200			●



Stocked Veneer Edging – Refer Page: 40 – 41

Blackbutt Quarter Cut

Species: Eucalyptus Pilularis | Density: 900kg/m3

Blackbutt Quarter Cut Timber Veneer is an exquisite, premium natural wood product, carefully harvested from lush, sustainably managed forests. It typically boasts a soft, pale brown shade, occasionally enriched with delicate, subtle pink undertones. With its warm, intricate, and captivating natural grain, this veneer provides a luxurious, flawless finish, perfectly suited for an array of applications, such as elegant furniture, sophisticated panelling, and bespoke cabinetry.

In Stock Availability:

Product Description	Dimension	10mm	17mm	19mm
Blackbutt Quarter DGB MDF MR E0	2400 x 1200			●



Stocked Veneer Edging – Refer Page: 40 – 41

European Oak Crown Cut

Species: Quercus Robur & Petraea & Ssp | Density: 755kg/m³

European Oak features a pale yellow-brown heartwood that deepens in colour as it ages. Its creamy sapwood stands out with a coarse texture and typically straight grain. The prominent ray patterns on the radial surface, often referred to as silver grain, add to its charm. Slower-grown versions of this wood are softer, making them perfect for furniture and veneer. It's also commonly known as French Oak or English Oak.

In Stock Availability:

Product Description	Dimension	10mm	17mm	19mm
European Oak Crown DGB MDF MR E0	2400 x 1200			●



Stocked Veneer Edging – Refer Page: 40 – 41

Jarrah Crown Cut

Species: Eucalyptus Marginata | Density: 820kg/m³

Jarrah is a rugged, steadfast timber that thrives in Australia's demanding outdoor settings. Its electrifying red tones, ranging from a fiery light red or warm brown to a bold, deep brick red, ignite spaces with character, while its rock-solid density ensures lasting strength. A favourite for flooring, cabinetry, and furniture, this wood transforms with every ray of sunlight, its hues intensifying into a mesmerizing, rich glow.

In Stock Availability:

Product Description	Dimension	10mm	17mm	19mm
Jarrah Crown DGB MDF MR E0	2400 x 1200			●



Plantation Oak Natural

Species: Eucalyptus Globulus | Density: 740kg/m3

Plantation Oak Natural Mirrors Plantation Oak but stands out with its untamed, bolder grain, often showcasing natural quirks like gum veins, knots, and bars. It's primarily embraced in the furniture world for stained finishes, where a pristine, polished look takes a backseat to raw character.

In Stock Availability:

Product Description	Dimension	10mm	17mm	19mm
Plantation Oak Natural DGB MDF STD E0	2400 x 1200	●	●	
Plantation Oak Natural DGB MDF MR E0	2400 x 1200		●	



Stocked Veneer Edging – Refer Page: 40 – 41

Plantation Oak Quarter Cut

Species: Eucalyptus Globulus | Density: 740kg/m³

Plantation Oak typically displays a light brown hue with subtle green-to-white undertones. Paired with its warm, natural grain, figure often emerges, offering a striking finish for any project, from furniture to panelling and cabinetry. It closely resembles Tasmanian Oak in look, distinguished only by its broader, more expansive grain banding.

In Stock Availability:

Product Description	Dimension	10mm	17mm	19mm
Plantation Oak Quarter Select DGB MDF STD E0	2400 x 1200		●	
Plantation Oak Quarter Select DGB MDF MR E0	2400 x 1200			●



Stocked Veneer Edging – Refer Page: 40 – 41

Spotted Gum Crown Cut

Species: Corymbia Maculata & Citroedora, Eucalyptus Henryi | Density: 950kg/m3

Spotted Gum dances across a spectrum of colours, from soft, earthy light browns to sultry, deep red-browns, while its sapwood gleams in crisp whites and gentle light browns. Its texture, moderately coarse and delightfully uneven, pairs with occasional wavy grains that twist into a captivating fiddleback pattern. With its warm, natural grain singing through every curve, it delivers a stunning, polished finish to furniture, panelling, and cabinetry alike.

In Stock Availability:

Product Description	Dimension	10mm	17mm	19mm
Spotted Gum Crown DGB MDF MR E0	2400 x 1200			●



Spotted Gum Quarter Cut

Species: *Corymbia Maculata* & *Citrodora*, *Eucalyptus Henryi* | Density: 950kg/m³

Spotted Gum dances across a spectrum of colours, from soft, earthy light browns to sultry, deep red-browns, while its sapwood gleams in crisp whites and gentle light browns. Its texture, moderately coarse and delightfully uneven, pairs with occasional wavy grains that twist into a captivating fiddleback pattern. With its warm, natural grain singing through every curve, it delivers a stunning, polished finish to furniture, panelling, and cabinetry alike.

In Stock Availability:

Product Description	Dimension	10mm	17mm	19mm
Spotted Gum Quarter DGB MDF MR E0	2400 x 1200			●



Stocked Veneer Edging – Refer Page: 40 – 41

Tasmanian Blackwood Crown Cut

Species: Acacia Melanoxylon | Density: 650kg/m³

Tasmanian Blackwood timber boasts a deep, velvety dark brown heartwood that contrasts beautifully with its lighter, golden or reddish-brown sapwood, shimmering with warmth. Its rich, natural grain flows effortlessly, lending an exquisite, refined finish to everything from furniture to panelling and cabinetry.

In Stock Availability:

Product Description	Dimension	10mm	17mm	19mm
Tasmanian Blackwood Cr DGB MDF MR E0	2400 x 1200			●



American Oak
Crown Cut
Random Mismatched

Stocked Panel Products



Raw LDF MR E0

Manufactured from managed and renewable plantation pine, CUSTOMwood Raw LDF MR E0 is a versatile panel for interior use in furniture & joinery applications, particularly in cupboards, wardrobes & storage applications. The excellent surface smoothness makes it ideal for further processing such as high gloss paint.

Product Information

Product Description	Dimension	35mm	39mm	44mm
Raw LDF MR E0	2700x900	●	●	●
Raw LDF MR E0	2700x1200	●	●	●



Iberpan MDF

Iberpan 400 is a very low-density fibreboard (approximately 400 kg/m³) developed to provide a solution for excessively heavy thick pieces. It can be edged and cut with the usual machinery for MDF. It can be coated with natural veneer or high-pressure laminates.

Product Information

Product Description	Dimension	40mm	50mm
Raw Iberpan MDF STD	2440x1220	●	●
Raw Iberpan MDF STD	3050x1220	●	●
Raw Iberpan MDF STD	3660x1220	●	●



Craftform

MDF MR E0

Craftform® E0 MR MDF is recommended for interior joinery applications where a flexible substrate is required. The substrate can be used either as a supporting material for further decorative finishing or as the feature itself. Craftform® MDF is ideal for fabricating into curved furniture and formed shapes for counter fronts, gondolas, displays and other decorative featured joinery. This can be veneered on the flat side.

Product Information

Product Description	Dimension	9mm
Raw Craftform MDF – Short Grain	1200x2400	●
Raw Craftform MDF – Long Grain	2400x1200	●



Raw Plain and Black Flameblock

FLAMEBLOCK® FRMDF is a high density FRMDF that is fire retardant all the way through. It has a fine sanded surface and a screwable core, and comes in natural pale brown colour and black, with some thicknesses only being available in pink. In the raw/painted form 12mm and thicker, Flameblock is certified to reach Fire Hazard Group 2 for interior walls and ceilings. This is not moisture resistant, and only available as STD MDF E0.

Product Information

Product Description	Dimension	9mm	12mm	16mm	18mm	25mm
Raw FLAMEBLOCK MDF	2440x1220	●	●	●	●	●
Raw FLAMEBLOCK MDF	3050x1220	●	●	●	●	●
Raw BLACK FLAMEBLOCK MDF	2440x1220	●	●	●	●	●
Raw BLACK FLAMEBLOCK MDF	3050x1220	●	●	●	●	●



Grey Fireguard

MR MDF Group 2

Trade Essentials Fireguard is an Australian Made, Group 2 Moisture Resistant, Medium Density Fibreboard with excellent fire retardant and machining properties. Offered as a raw substrate and featuring a versatile Grey Core, the stable, homogenous surface makes it ideally suited to laminating and veneering.

Product Information

Product Description	Dimension	9mm	12mm	16mm	18mm
Grey FIREGUARD MDF MR	2400x1200	●	●		●
Grey FIREGUARD MDF MR	3000x1200	●	●		●
Grey FIREGUARD MDF MR	3600x1200	●	●		●



Raw Black

MDF MR E0

Black MRMDF should only be used internally, not exposed to the weather, but may be subject to occasional wetting such as humidity in bathrooms and some condensation. It should not be used in circumstances where continued wetting is likely. It can be coated with natural veneer or high-pressure laminates, or suitable for clear or paint lacquers.

Product Information

Product Description	Dimension	9mm	12mm	16mm	18mm
Black MDF MR	2440x1220	●	●	●	●
Black MDF MR	3050x1220	●	●	●	●



Raw Birch B/BB Exterior Plywood

B/BB Birch Plywood is a versatile, high-quality material with a smooth surface and light colour, ideal for painting, staining, laminating, or veneering. The B/BB grade indicates a smooth, sanded B-grade face with minimal imperfections and a BB-grade back with more noticeable knots or natural characteristics and features. Constructed of equal layers, Birch Plywood is suitable for clear finishing on both top face and edge. Birch is highly sought after for furniture, veneering, wall linings, partitions and many other “seen” projects.

Product Information

Product Description	Dimension	4mm	6mm	9mm	12mm	15mm	18mm	24mm	30mm
Raw Birch B/BB Exterior Ply	2440x1220	●	●	●	●	●	●	●	●



Raw Birch BB/BB Exterior Plywood

BB/BB Birch Plywood is a versatile overlay ply material only suitable for veneering or laminating. Constructed of equal layers, it can be painted, however the BB/BB indicates that both sides have more noticeable knots, butterfly patches, and/or more natural characteristics and features.

Product Information

Product Description	Dimension	4mm	6mm	9mm	12mm	15mm	18mm	24mm	30mm
Raw Birch BB/BB Exterior Ply	2440x1220	●	●	●	●	●	●	●	●
Raw Birch BB/BB Exterior Ply	1220x3050			●	●	●	●	●	●
Raw Birch BB/BB Exterior Ply	1525x3050				●	●	●	●	●



Hardwood BB/CC Exterior Plywood

Imported Hardwood Exterior Plywood is an A-Bond Phenolic plywood. It is strong and durable, with a paintable face - perfect for construction in projects where strength is required. It can be coated with natural veneer or high- pressure laminates.

Product Information

Product Description	Dimension	3.6mm	6mm	9mm	12mm	15mm	18mm	25mm
Raw BB/CC Hardwood Ply	2440x1220	●	●	●	●	●	●	●



BS1088 Marine Exterior Plywood

BS1088 Marine Plywood is a higher-grade Plywood made to British Marine Standards. It is more durable than nominal Exterior Plywoods and has a decorative face suitable for clear finishing. Often used for higher-grade inside and outside furniture applications. It can be coated with natural veneer or high-pressure laminates.

Product Information

Product Description	Dimension	4mm	6mm	9mm	12mm	15mm	18mm	25mm
Raw BS1088 Marine Ply	2440x1220	●	●	●	●	●	●	●



Radiata B/C Exterior Plywood

Clear grade Radiata plywood with no open face knotholes. Minimal wood patches and synthetic repairs. Clean veneer face, typically knot-free. Ideal for shelves, furniture, toys, packaging, crates, industrial uses, or wall construction.

Product Information

Product Description	Dimension	9mm	12mm	15mm	18mm	25mm
Radiata B/C Ply	2400x1200	●	●	●	●	●



Bending Plywood – Interior BB/CC

Bending Plywood is ideal for curving around columns or curved spaces. It can be veneered to match joinery or used raw for specialised projects. It is available in Long and Cross-grain depending on what curves or bending you require your project to have. This is an interior-glue line only, and only to be used in interior applications.

Product Information

Product Description	Dimension	1.5mm	5.5mm	8mm
Raw Bending Ply	1220x2440		●	●
Raw Bending Ply	2440x1220	●	●	●
Raw Bending Ply	3050x1220	●		

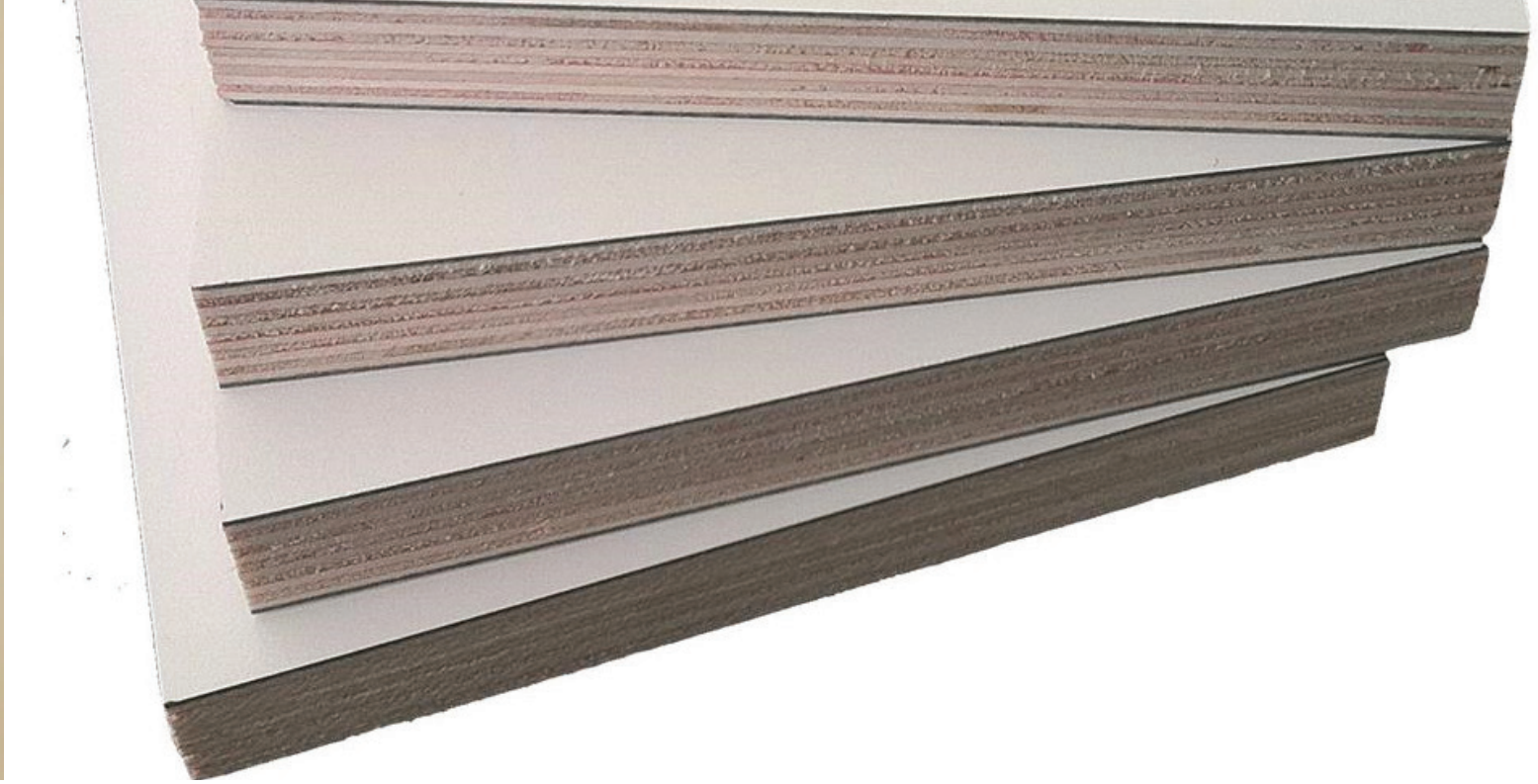


Hoop Pine B/B Exterior Structural Plywood

BB Structural is a cost-effective plywood panel that combines strength and beauty. Made with high quality “B” grade veneers on the face and back, BB is constructed with an “A” bond glue line and structurally rated to F17. BB Structural is a very popular and versatile plywood panel with an almost endless range of applications such as flooring, wall and ceiling cladding, furniture making, shop fitting and cabinetry. BB Structural is made to Australian standard AS/NZS 2269.

Product Information

Product Description	Dimension	4mm	6.5mm	9mm	12mm	15mm	16mm	18mm	24mm	30mm
Raw Hoop Pine B/B Exterior Ply	2400x1200	●	●	●	●	●	●	●	●	●



White Liner Exterior Plywood

CPV's White Liner on Exterior Plywood is a highly durable and long-lasting product bonded with E1 grade glue. The bonded surface consists of high- pressure laminate sheets, which are hard-wearing, water-resistant, stain- resistant, and easy to clean. Cabinetry such as kitchen and vanity carcasses made this is notably durable, rigid, and strong.

Product Information

Product Description	Dimension	16mm	19mm
White Liner Exterior Ply G2S	2400 x 1200	●	●

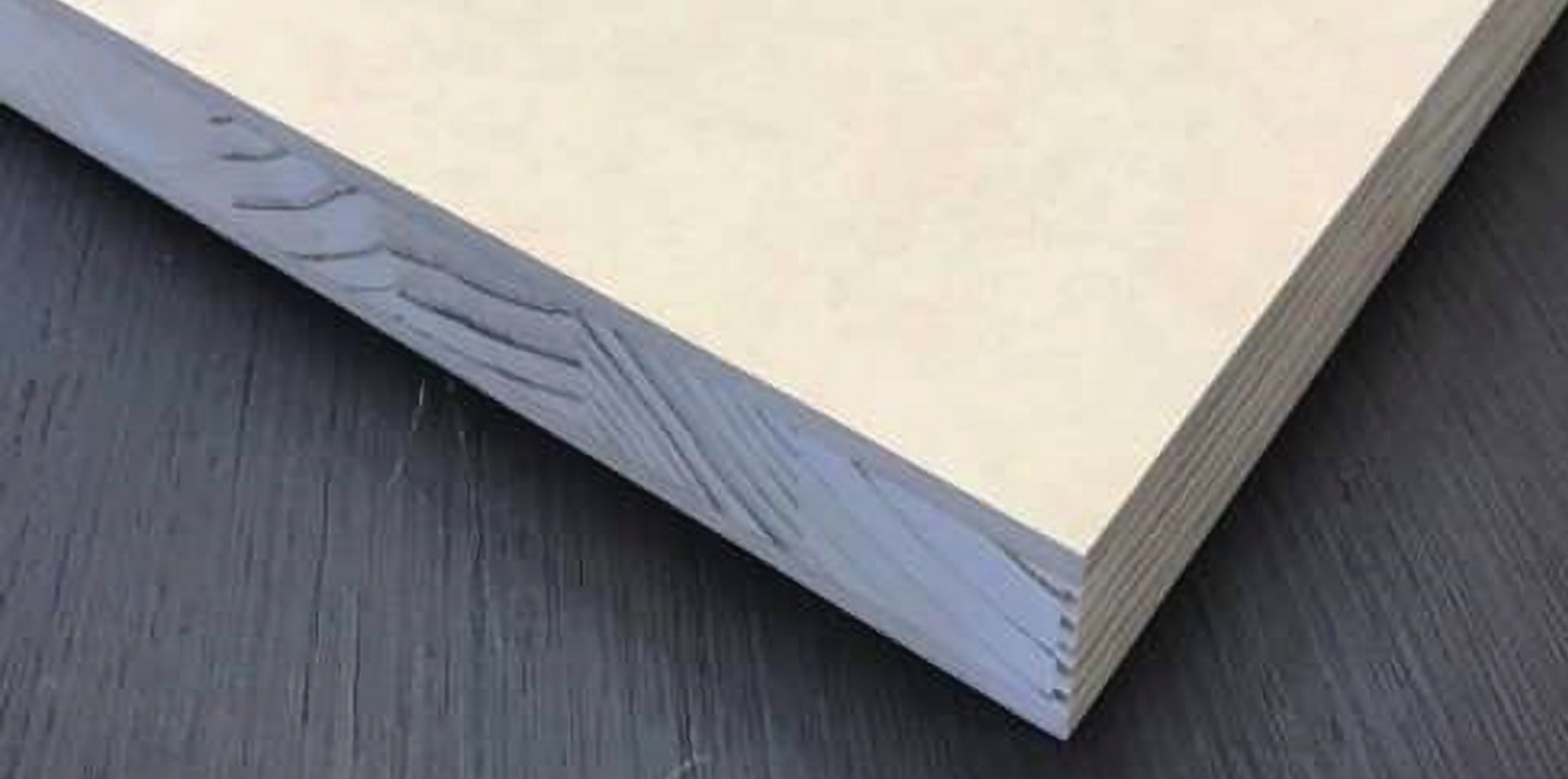


Black / White PVC Versapanel

Versapanel is a PVC Substrate suitable for outdoor applications like signs, furniture or areas that may have tendency to be exposed to moisture. Available in both Black and White to match your decor.

Product Information

Product Description	Dimension	18mm
White/Black Versapanel	2440 x 1220	●



MDF Faced Solid Core Doors

MDF Skinned Solid Core Blockboard Doors are only suitable for internal use. They are solid throughout and therefore don't require a perimeter frame. These doors are extremely robust and versatile. They can be resized, openings cut and otherwise modified easily and without impairing their structural strength. It can be coated with natural veneer or high-pressure laminates.

Product Information

Product Description	Dimension	35mm	39mm	44mm	50mm
MDF Solid Core Door	2400x900	●	●	●	●
MDF Solid Core Door	2400x1200	●	●	●	●
MDF Solid Core Door	2700x900	●	●	●	●
MDF Solid Core Door	2700x1200	●	●	●	●
MDF Solid Core Door	3000x900	●	●	●	●
MDF Solid Core Door	3000x1200	●	●	●	●





American Oak
Crown Cut

DECOEDGE - Thin Veneer Edging

Availability Chart | (Thin 0.5mm) Standard Range

Veneer Species	21mm x 100m Unglued / Roll	21mm x 100m Preglued / Roll	21mm x 50m Preglued / Roll	30mm x 100m Unglued / Roll	30mm x 100m Preglued / Roll	30mm x 50m Preglued / Roll	40mm x 100m Unglued / Roll	40mm x 100m Preglued / Roll	40mm x 50m Preglued / Roll	100m x other Unglued / Sqm	100m x other Preglued / Sqm
American Cherry	●	●	●	●	●	●	●	●	●	●	●
American Oak	●	●	●	●	●	●	●	●	●	●	●
American Walnut	●	●	●	●	●	●	●	●	●	●	●
Beech	●	●	●	●	●	●	●	●	●	●	●
Blackbutt	●	●	●	●	●	●	●	●	●	●	●
Blackbutt NFG	●	●	●	●	●	●	●	●	●	●	●
Bluegum (Sydney)	●	●	●	●	●	●	●	●	●	●	●
Brushbox	●	●	●	●	●	●	●	●	●	●	●
Cedar AR (Aust. Red)	●	●	●	●	●	●	●	●	●	●	●
Cedar WR (West'n Red)	●	●	●	●	●	●	●	●	●	●	●
European Ash	●	●	●	●	●	●	●	●	●	●	●
European / White / Snow Birch	●	●	●	●	●	●	●	●	●	●	●
European Oak	●	●	●	●	●	●	●	●	●	●	●
Hoop Pine	●	●	●	●	●	●	●	●	●	●	●
Ironbark – Grey	●	●	●	●	●	●	●	●	●	●	●
Ironbark – Red	●	●	●	●	●	●	●	●	●	●	●
Jarrah	●	●	●	●	●	●	●	●	●	●	●
Makore / Sapele	●	●	●	●	●	●	●	●	●	●	●
Maple – Queensland	●	●	●	●	●	●	●	●	●	●	●
New Guinea Rosewood	●	●	●	●	●	●	●	●	●	●	●
Pacific Maple (SPM)	●	●	●	●	●	●	●	●	●	●	●
Plantation Oak	●	●	●	●	●	●	●	●	●	●	●
Radiata (Clear)	●	●	●	●	●	●	●	●	●	●	●
Red Gum	●	●	●	●	●	●	●	●	●	●	●
Rock Maple	●	●	●	●	●	●	●	●	●	●	●
Silky Oak	●	●	●	●	●	●	●	●	●	●	●
Spotted Gum	●	●	●	●	●	●	●	●	●	●	●
Stringy Bark	●	●	●	●	●	●	●	●	●	●	●
Sycamore	●	●	●	●	●	●	●	●	●	●	●
Tallowwood	●	●	●	●	●	●	●	●	●	●	●
Tas Ash / Vic Ash	●	●	●	●	●	●	●	●	●	●	●
Tas Blackwood	●	●	●	●	●	●	●	●	●	●	●
Tas Myrtle	●	●	●	●	●	●	●	●	●	●	●
Tas Oak	●	●	●	●	●	●	●	●	●	●	●
Teak	●	●	●	●	●	●	●	●	●	●	●
Walnut – Queensland	●	●	●	●	●	●	●	●	●	●	●
Wenge	●	●	●	●	●	●	●	●	●	●	●

Other species available on request: Subject to minimum production run. As all veneer bundles are different in dimension, all material produced in the run will be charged and supplied to the customer.

Contracting Service: Conversion and processing of customer's material. Price on Application and subject to minimum run, and material suitable for processing.

DECOEDGE – 2mm Multi Veneer Edging

Species	100 x 21 x 2mm Unglued	100 x 29 x 2mm Unglued	100 x 38 x 2mm Unglued	100 x 45 x 2mm Unglued
American Cherry	●	●	●	
American Oak	●	●	●	●
American Walnut	●	●	●	
Anegre	●	●	●	
Beech	●	●	●	
Blackbutt	●	●	●	
Blackbutt NFG	●	●	●	
Brushbox	●	●	●	
Jarra	●	●	●	
Makore	●	●	●	
Multiplex	●	●	●	
Pine	●			
Rock Maple	●	●	●	
Sapele	●	●	●	
Spotted Gum	●	●	●	
Tas. Blackwood	●	●	●	
Tas. Myrtle	●	●	●	
Tas. Oak	●	●	●	
Vic. Ash	●	●	●	
Wenge	●	●	●	

Raw Veneer Leaf Product Range

Species	2440mm x 305mm Unglued Each "Raw"	2440mm x 305mm Preglued Each "Thermo"
American Oak	●	●
American Walnut	●	●
AR Cedar	●	●
Blackbutt	●	●
Blackbutt NFG	●	●
Beech	●	●
Jarrah	●	●
Pacific Maple	●	●
Radiata	●	●
Rock Maple	●	●
Sapele	●	●
Spotted Gum	●	
Tas Blackwood	●	●
Tas Oak	●	●
Teak	●	●
Vic Ash	●	●

Veneer Skin Pack Product Range (SPK)

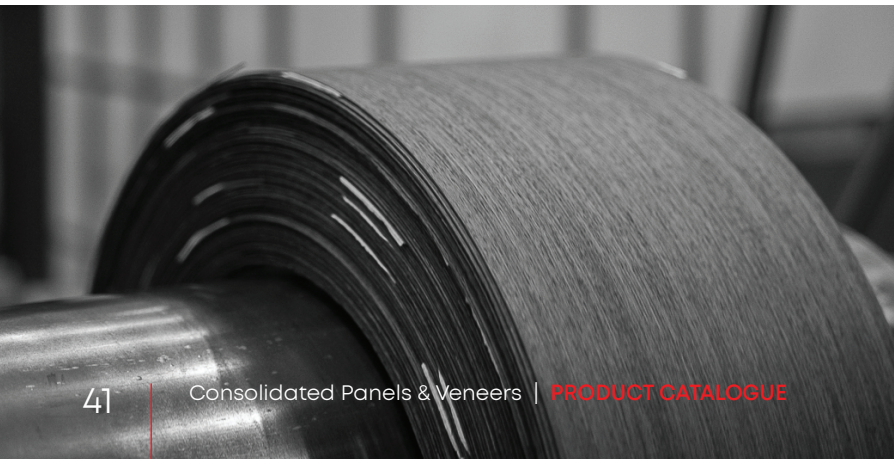
Veneer Species	5m x 21mm Preglued / Each Roll
American Oak	●
American Walnut	●
AR Cedar	●
Beech	●
Jarrah	●
Pacific Maple	●
Radiata	●
Rock Maple	●
Sapele	●
Tas Blackwood	●
Tas Oak	●
Teak	●
Vic Ash	●

Melamine Skin Pack Product Range (SPK)

Melamine Decor	10m x 21mm Preglued / Each Roll
White Satin	●
Black Stipple	●
Antique White	●
Oyster Grey	●
Marl Beige	●

Melamine Product Range

Melamine Decor	50m x 21mm Preglued / Each Roll	150m x 21mm Preglued / Each Roll	400lm x Overwidth - Unglued or Preglued
White Satin	●	●	●
White Stipple	●	●	●
Black Stipple	●		●
Antique White	●		●
Oyster Grey	●		●



The Essentials Collection - Edging

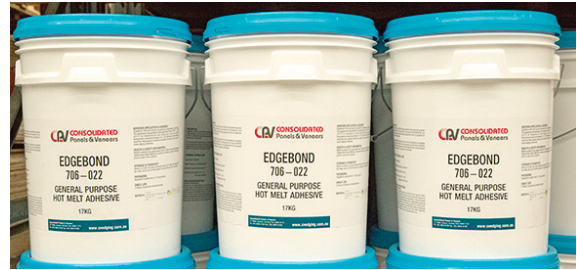
Colour	Number	Melamine	0.4mm PVC	1mm ABS	2mm ABS
Antique Wiluna White	028B	●	●	●	●
Black ProGloss	2110			●	
Black Satin	2110		●	●	●
Black Stipple	2110	●	●	●	●
Brushed Silver	869M				●
Burnished Wood	4396				●
Charcoal	140L			●	●
Dansk Maple	586M				●
Deep Anthracite	141L			●	●
Golden Beech	532M			●	●
Ironstone	611M			●	●
Lemon Tree	582M				●
Licorice Linea	3605			●	●
Marl Beige	4404				
Milano Walnut	419T				●
New Graphite	622M				●
New Stainless Steel	870M				●
Oyster Grey / Seal Grey	134L	●		●	●
Oyster Linea	533M			●	●
Parchment / Gentle Beige	125L			●	●
Polar White / Snowdrift	280B			●	●
Polar White / Snowdrift ProGloss	398B			●	
Silver Strata	639M				●
Sublime Teak	695M				●
White ProGloss	1023			●	
White Satin	1021	●	●	●	●
White Silk ProGloss	361B			●	
White Stipple	1022	●	●	●	●
Young Beech	609M			●	●
Zinc Works	702M				●



EDGEBOND

706-022 Off White / Natural

- General Purpose Hot Melt Adhesive.
- Formulated for use in most conventional edge-banders.
- A filled Hot Melt Adhesive for use with timber veneer, melamine, PVC and ABS edge-banding.
- Equivalent; Rakoll K4 570
Jowat 284.70
- Available in 15kg Buckets.



EDGEbond+

706-733 Clear

- Premium Hot Melt Adhesive
- Formulated for use in most conventional edge-banders.
- A non-filled Hot Melt Adhesive for use with timber veneer, melamine, PVC and ABS edge-banding.
- Equivalent; Rakoll
Jowat
- Available in 15kg Buckets



Supplied in a 15kg bucket for ease of handling, storage and dispensing. TDS & SDS available on website.

Australian made to suit local manufacturers.

Notes



Consolidated Panels & Veneers

1/7 Millner Avenue
Horsley Park NSW 2175

02 9604 8100

sales@cpv.com.au

cpv.com.au